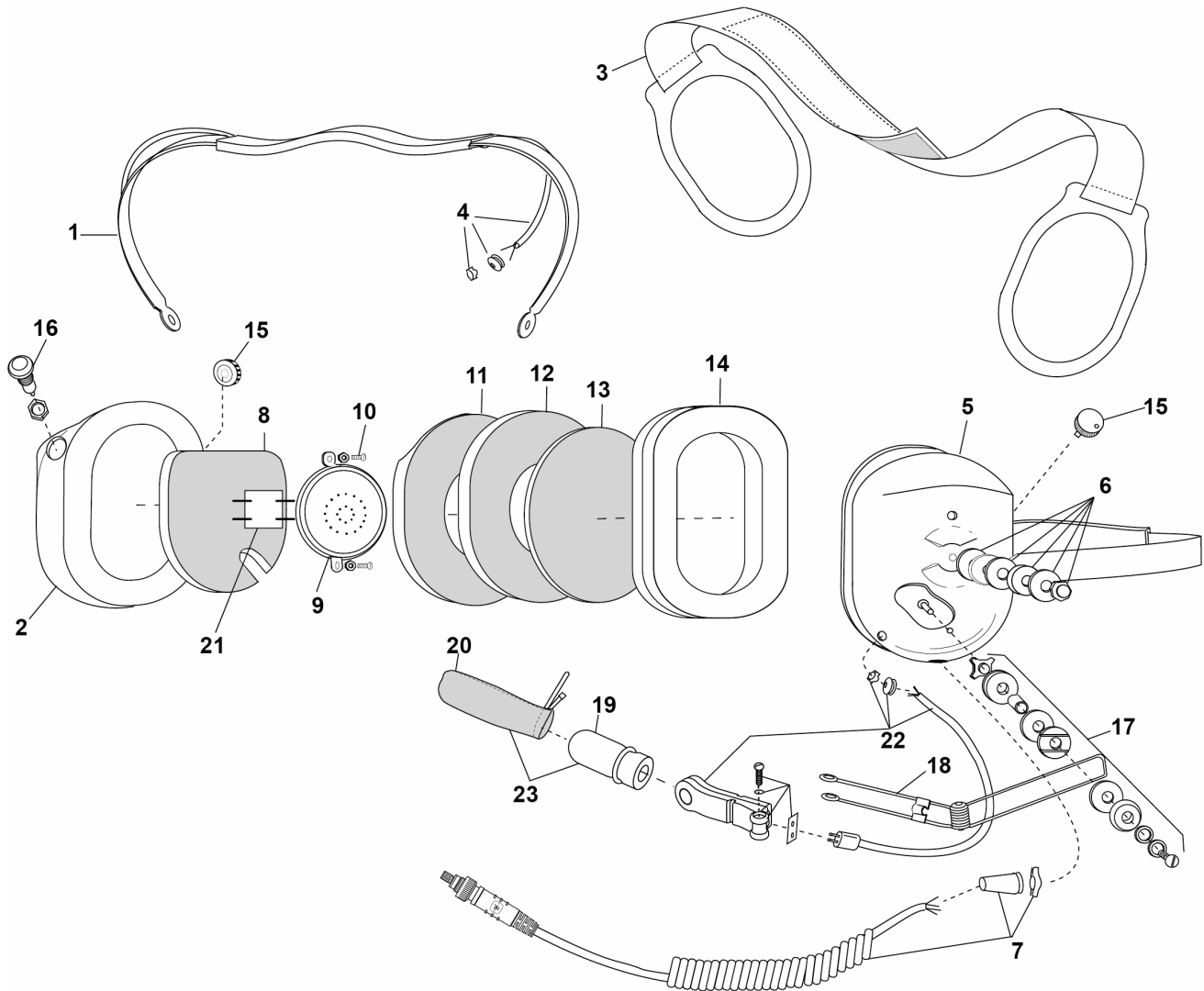


PARTS LIST MODEL H9842



No.	Description	Part No.
1	Spring Assembly	40623G-30
2	Dome, Right	15522P-30
3	Adjustable Strap	10370G-03
4	Overhead Cord Assembly	22607G-13
5	Dome, Left (mic side)	15522P-35
6	Nut and Washer Kit (10 pk)	12052G-04
7	Comm Cord Assy Kit	40599G-72
8	Filter	11410P-02
9	Earphone Assembly	10376G-86
10	Screw (10/pk)	00023M-07
11	Filter	25629P-05
12	Dome Filter (1 each)	14096P-05

No.	Description	Part No.
13	Filter (1 each)	14096P-09
14	Undercut Gel Earseal (pair)	40863G-02
15	Volume Control	09349P-40
16	Switch Mic ON/OFF	26619P-21
17	Boom Guide Kit	12840G-18
18	Microphone Boom Assy	12765G-09
19	Screen, Wind, Mic	15074P-08
20	Windscreen Cover w/Tie	18792G-04
21	PCB Assy, Mic AMP	40415G-54
22	Mic Plug Cord Kit	40910G-06
23	Mic Protector/Windscreen Kit	41090G-23

ELECTRICAL SCHEMATIC MODEL H9842

