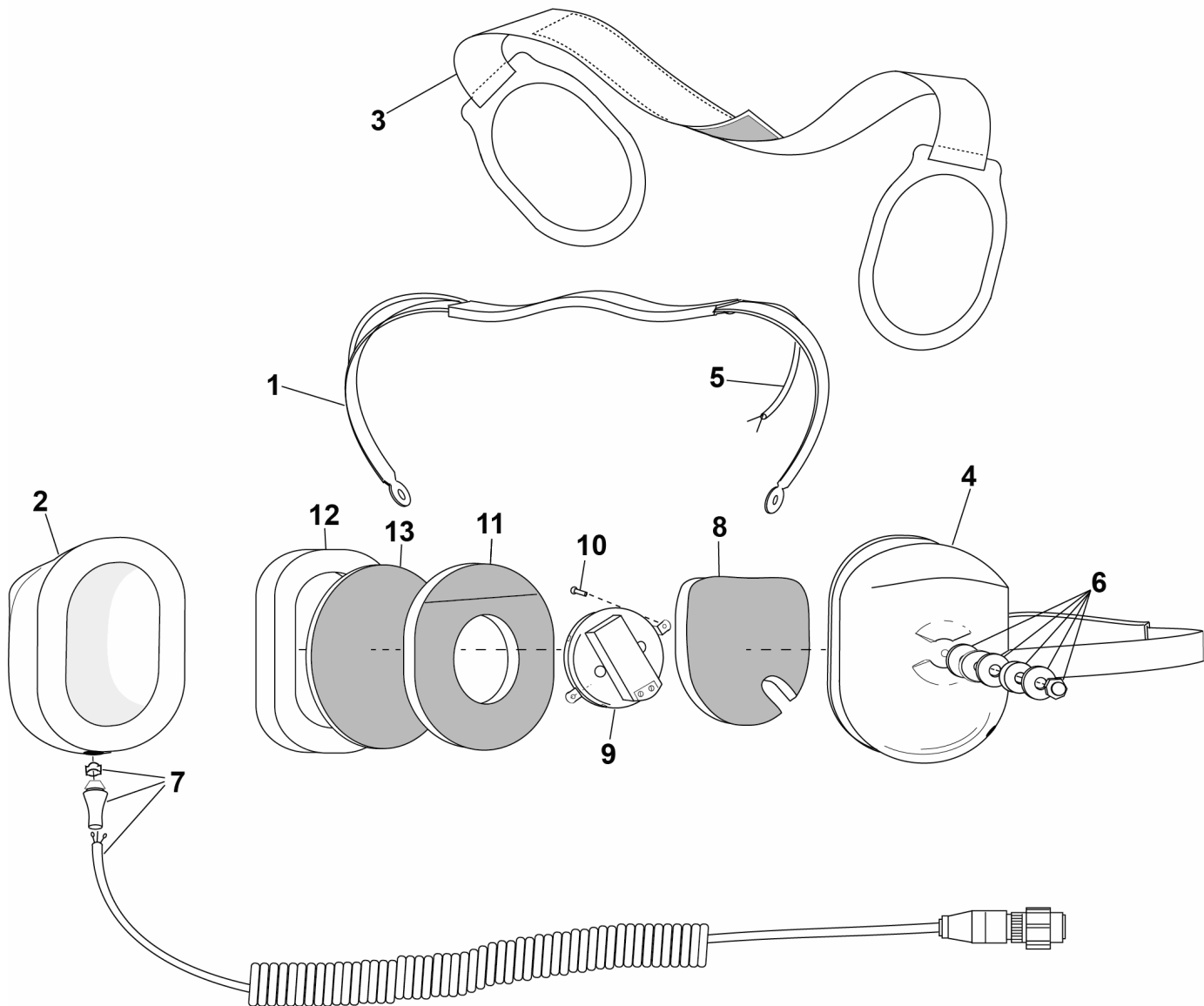


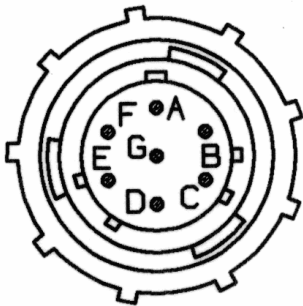
PARTS LIST
P/N 12516G-05



No.	Description	Part No.
1	Spring Assembly	40623G-24
2	Right Dome	15522P-29
3	Adjustable Strap	10370G-03
4	Left Dome	15522P-28
5	Overhead Cord	18741G-10
6	Nut & Washer Kit (10/pk)	12052G-03
7	Comm Cord Kit	40599G-58

No.	Description	Part No.
8	Filter	11410P-02
9	Earphone Assembly	10376G-87
10	Screw (10/pk)	00023M-07
11	Filter	25629P-05
12	Flo-Fit Gel Earseal (pair)	40243G-02
13	Filter (1 each)	14096P-09

ELECTRICAL SCHEMATIC
P/N 12516G-05



AMPHENOL
62GB-56T-10-07PF

