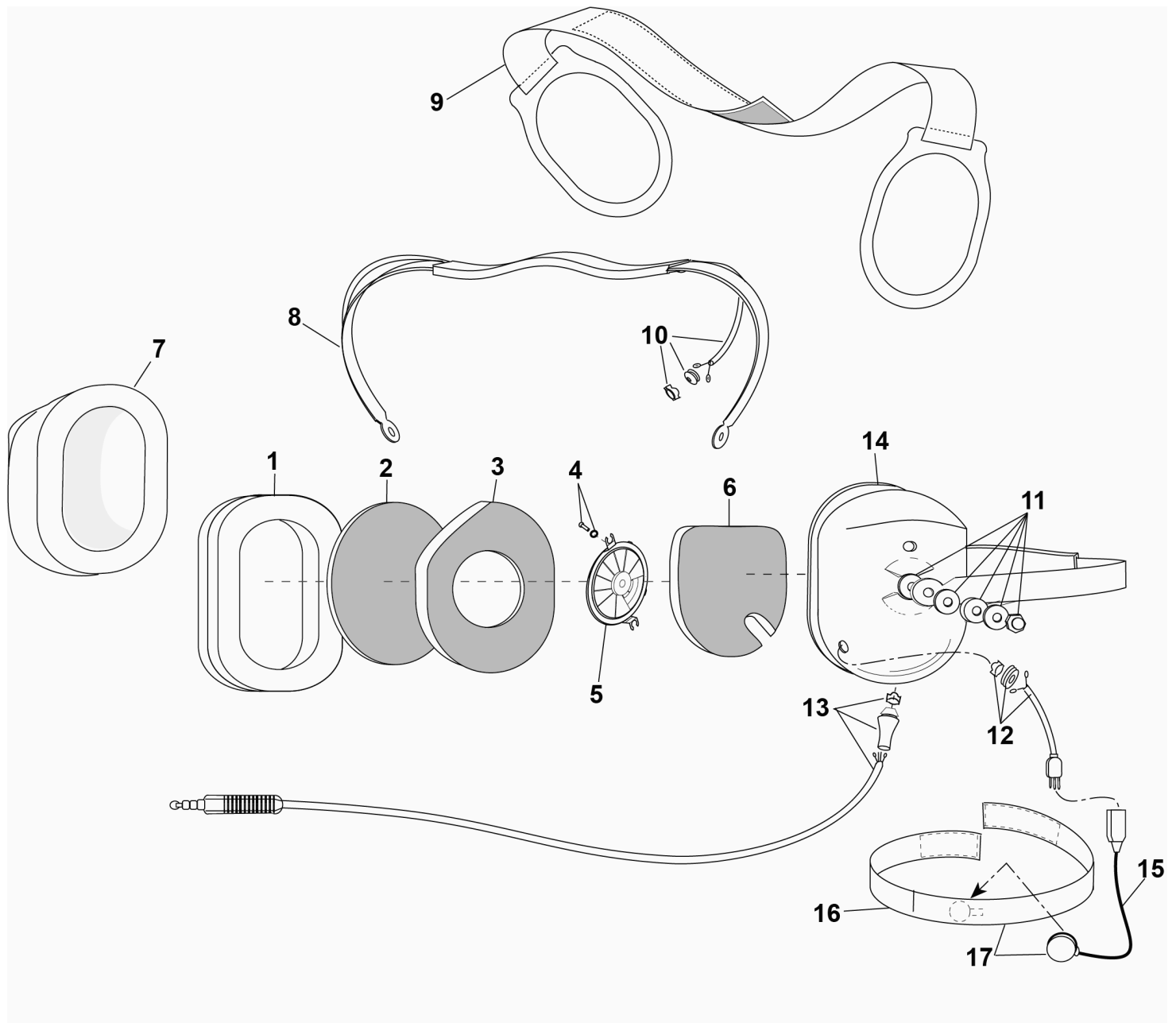


PARTS LIST MODEL H6045



No.	Description	Part No.
1	Earseal (pair)	18316G-02
2	Filter (1 each)	14096P-09
3	Filter	25629P-05
4	Screw (10/pk)	00023M-08
5	Earphone Assembly	10376G-89
6	Filter	11410P-02
7	Dome, Right	15522P-03
8	Spring Assembly	10117G-97
9	Adjustable Strap	10370G-03

No.	Description	Part No.
10	Overhead Cord	18741G-05
11	Nut and Washer Kit (10 pk)	12052G-02
12	Microphone Jack Cord Assembly	18804G-17
13	Communication Cord Assy Kit	18028G-80
14	Left Dome	15522P-13
15	TM-3 Throat Microphone	18824G-08
16	Neck Band Assembly	18866G-08
17	Throat Mic w/Neck Band Assy	18882G-04

ELECTRICAL SCHEMATIC
MODEL H6045

