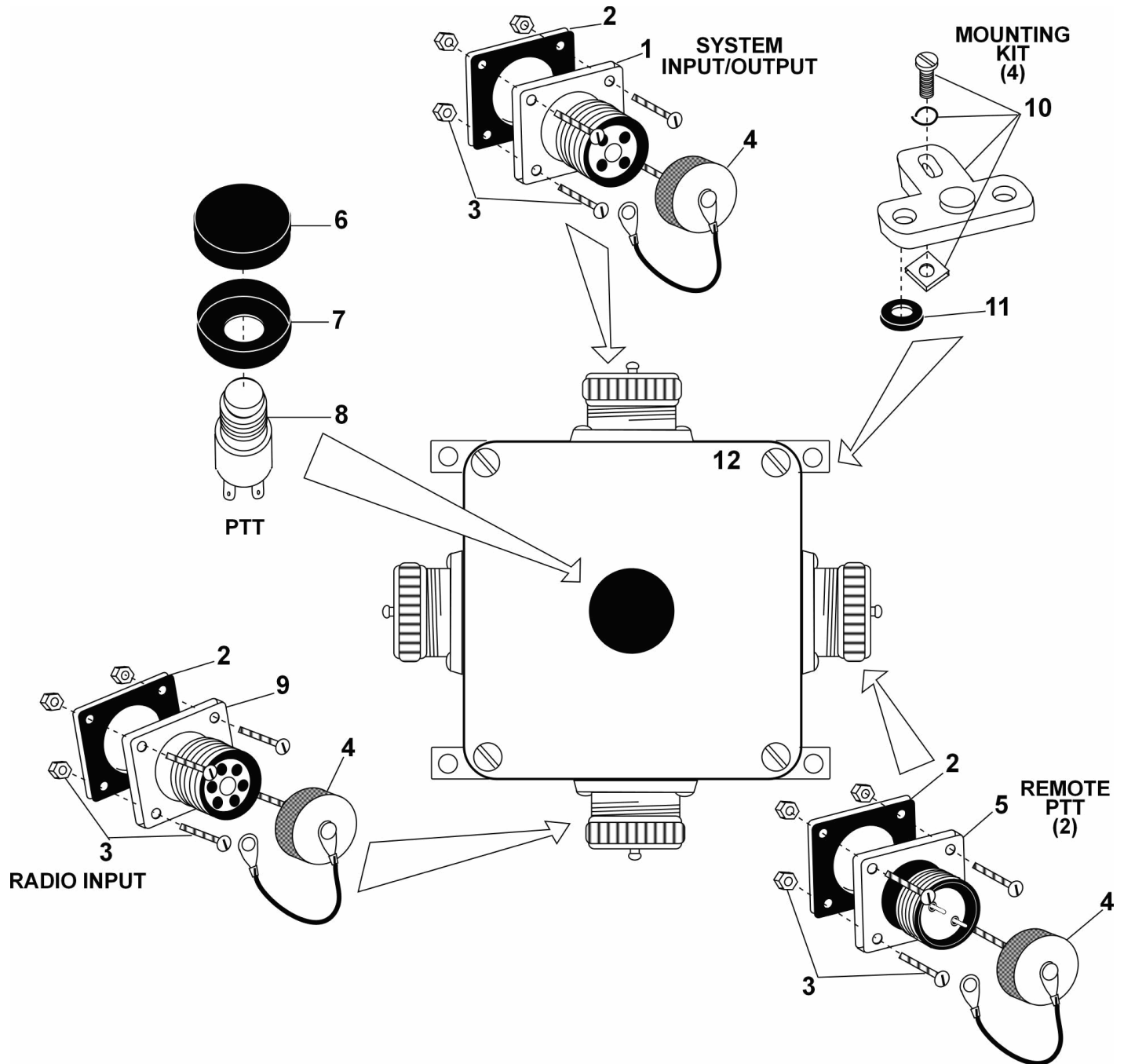


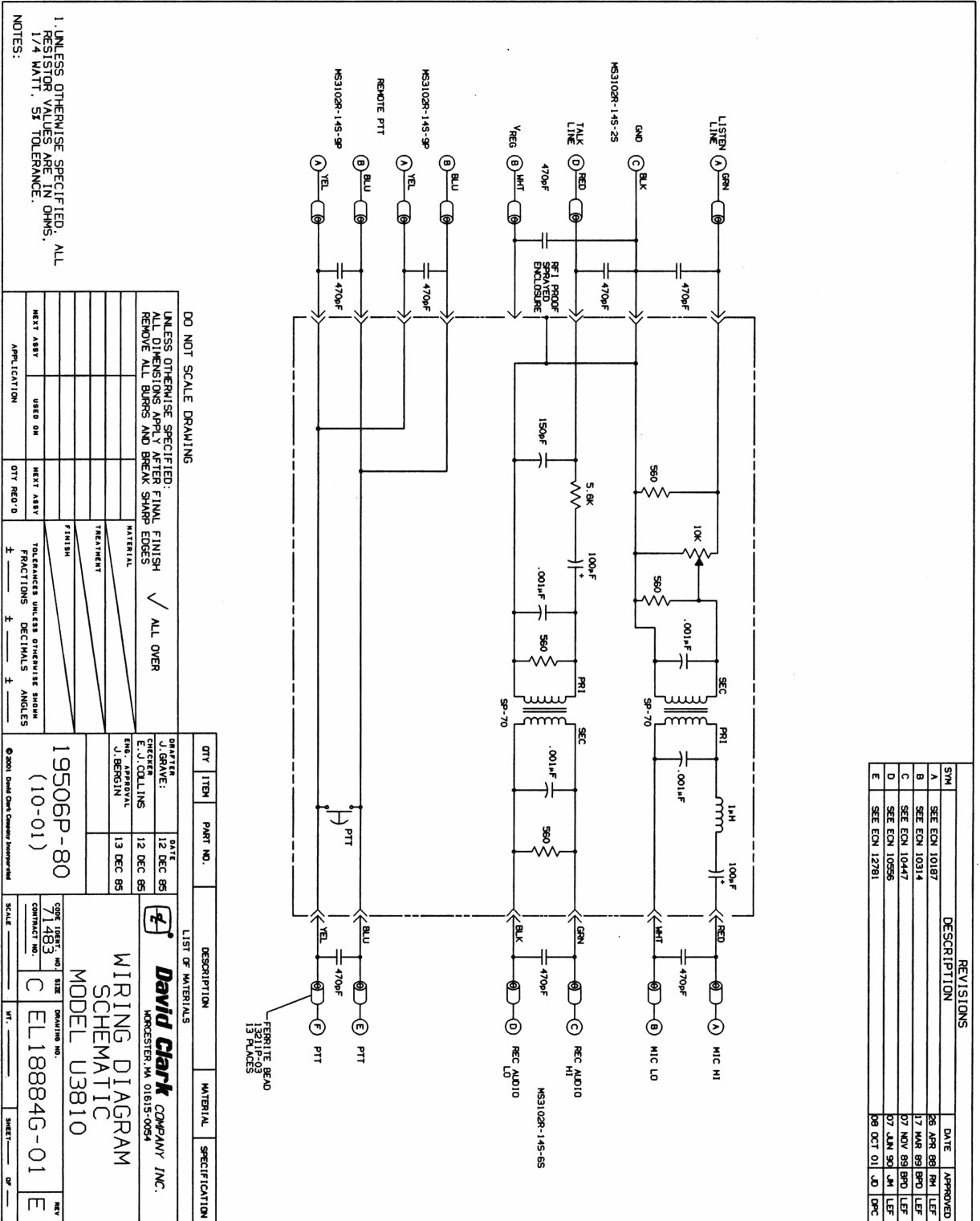
**PARTS LIST  
MODEL U3810**



No.	Description	Part No.
1	Connector (4 socket)	00084M-04
2	Gasket	13176P-03
3	Screws and Nuts (4 ea.)	18900G-01
4	Cap (and nylon cord)	13238P-01
5	Connector (2 Pin)	00084M-03
6	Shield, Switch	17976P-01

No.	Description	Part No.
7	Guard, Switch	26553P-03
8	Push-To-Talk Switch	26619P-01
9	Connector (6 Socket)	00084M-05
10	Mounting Kit	09865P-03
11	Grommet (4 ea.)	18900G-08
12	Box	26497P-07

# ELECTRICAL SCHEMATIC MODEL U3810



1. UNLESS OTHERWISE SPECIFIED, ALL RESISTOR VALUES ARE IN OHMS, 1/4 WATT, 5% TOLERANCE.

DO NOT SCALE DRAWING  
UNLESS OTHERWISE SPECIFIED, ALL DIMENSIONS APPLY AFTER FINAL FINISH REMOVE ALL BURRS AND BREAK SHARP EDGES

QTY	LITER	PART NO.	DESCRIPTION	MATERIAL	SPECIFICATION

DATE	12 DEC 85
DRIVER	J. GRAVE
CHECKER	E. J. COLLINS
ENG. APPROVAL	V. BERGIN
DATE	13 DEC 85

19506P-80 (10-01)  
David Clark COMPANY, INC.  
WIRING DIAGRAM SCHEMATIC MODEL U3810  
KINGSTON, MA 01615-0054

SYN	REVISIONS	DATE	APPROVED
A	SEE ECN 10187	26 APR 88	RM LEF
B	SEE ECN 10314	17 MAR 89	BRD LEF
C	SEE ECN 10447	07 NOV 89	BRD LEF
D	SEE ECN 10556	07 JUN 90	JM LEF
E	SEE ECN 12781	08 OCT 01	JD PRC

188846-01 E