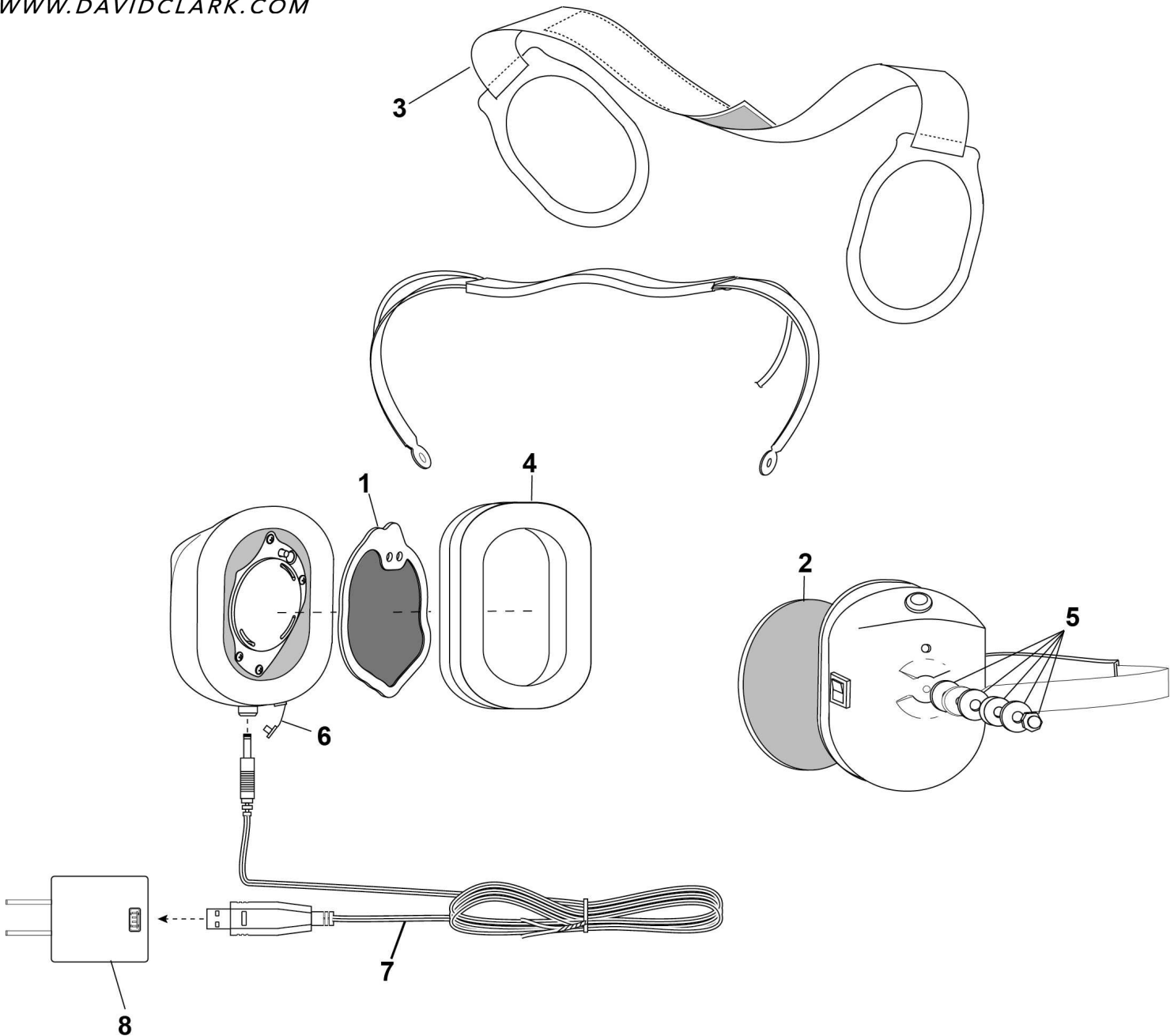


**PARTS LIST
MODEL HBT-60**



No.	Description	Part No.
1	Filter (Right)	15512P-05
2	Filter (Left)	15512P-03
3	Support Assembly	10370G-03
4	Undercut Gel Earseal (pair)	40863G-02

No.	Description	Part No.
5	Nut & Washer Kit (10/pk)	12052G-03
6	Dust Cap	13238P-28
7	Charger Cable	09923P-44
8	AC/DC Adapter	09525P-25

MODEL HBT-60

Quick Start Guide

The HBT-60 is designed for a simple and comfortable fit. Proper fit of this device is critical to its noise attenuation effectiveness and stability on the head. Be sure to adjust overhead support strap until it rests comfortably on top of your head. Move the earcups slightly up or down or from side to side until you feel you have maximum attenuation.

The use of eyeglasses will reduce the attenuation afforded by this device. Use "Stop Gaps", P/N 12500G-02; they are inexpensive and effective in restoring some of the attenuation.

- Pairing
 - On/Off pairing button (inside dome)
 - Press & Hold for On/Off until tone heard
 - Press once for pairing mode. Light goes Red + Blue alternating
 - Follow the standard pairing procedure for your smartphone, tablet or other Bluetooth device; see the manual for full details.

- Play/Pause – Button outside of ear cup
 - First press to play
 - Second press to pause

- Volume Up/Down
 - Press up to increase volume. Double beep at max.
 - Press down to decrease volume. Double beep at min.

Replaceable Parts Removal/Installation

- Earseals (40863G-02)
 - To remove: Gently pull off.
 - To install: Stretch earseal over lip on dome until completely seated on dome.