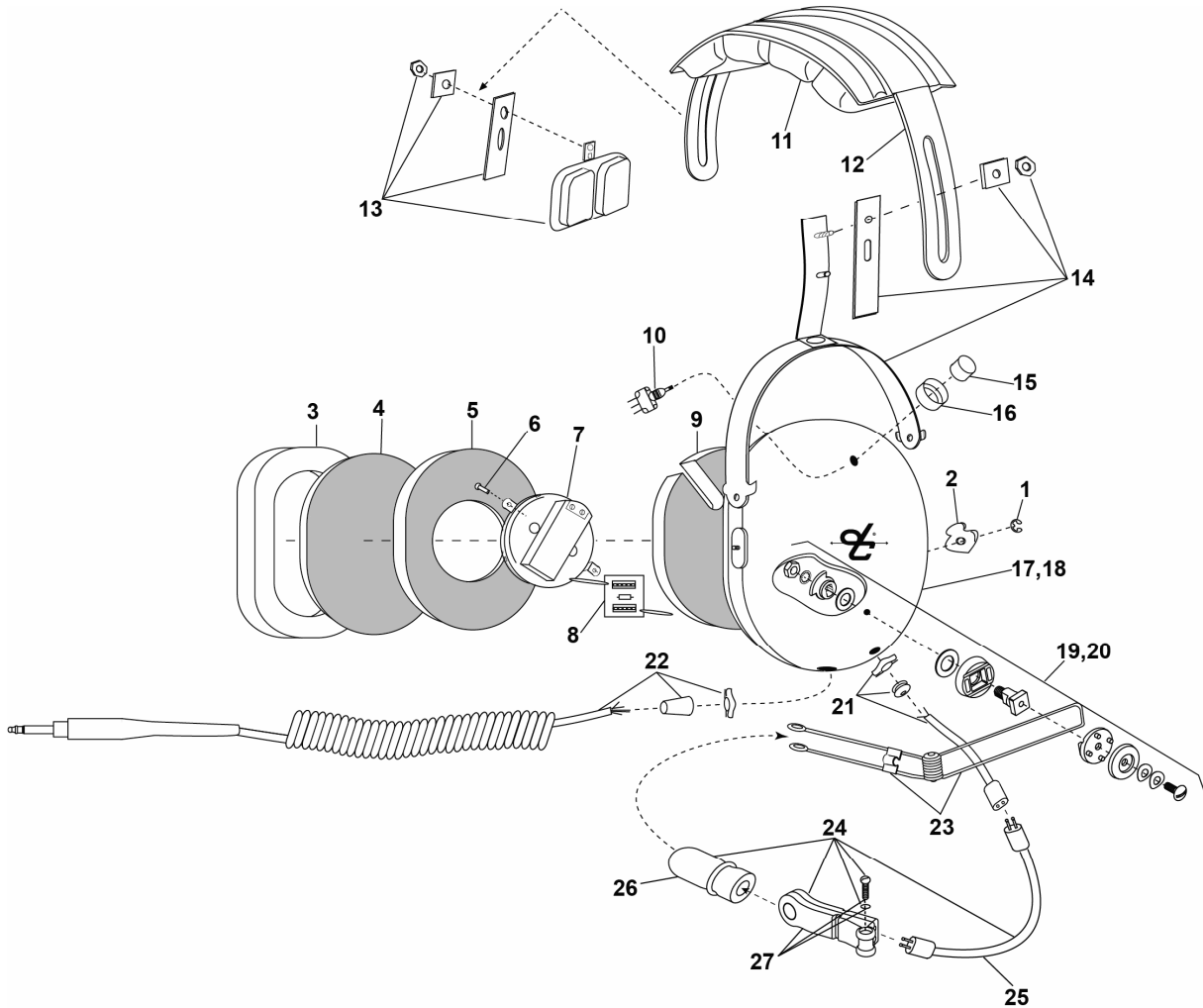


**PARTS LIST
MODEL H3392**


Note: Nondetented Boom shown (18,20)

No.	Description	Part No.
1	Retaining Ring (10/pk)	00009M-03
2	Dome Stop	15097P-01
3	Earseal (pair)	18316G-02
4	Filter (1 each)	14096P-09
5	Dome Filter	25629P-03
6	Screw/Grommet Kit (4 pk)	18900G-47
7	Earphone Assembly	10376G-20
8	PCB Assembly	18289G-13
9	Dome Filter	26475P-02
10	Push Button Switch	09851P-17
11	Headpad Assy	40075G-02
12	Headband Spring	15247P-01
13	Temple Pad Assy Kit	18900G-37
14	Stirrup & Clamp Kit	22378G-08

No.	Description	Part No.
15	Switch Cap Kit	41090G-13
16	Switch Guard	13148P-01
17	Left Dome (Detented Boom)	15253P-17
18	Left Dome (Nondetented Boom)	15253P-86
19	Boom Guide Kit (Detented)	12840G-01
20	Boom Guide Kit (Nondetented)	12840G-20
21	Microphone Cord Assy Kit	10405G-05
22	Communication Cord Assy Kit	18028G-34
23	Microphone Boom Assy	12765G-04
24	DC-1A Microphone w/Cord	12948G-14
25	Microphone Cord Assembly	10516G-14
26	Mic Protector	40062G-06
27	DC-1A Microphone	18920G-04

ELECTRICAL SCHEMATIC MODEL H3392

