

## Installation Instructions C91-20RD1 Radio Interface Cord (Motorola XTL/APX Series)

### Description

The C91-20RD1 Radio Interface Cord provides connection between a 9100 Digital Intercom System and Motorola XTL/APX series radios or control heads (O5/O9 heads only), thereby making the mobile radio's receive and transmit functions a part of the intercom system.

Installation – Installation of the C91-20RD1 cable and the interaction with the XTL/APX radio is dependent upon the configuration of the 9100 Digital Intercom System. Navigate to our website and download detailed installation and configuration instructions or scan the QR code below for instant access.



The C91-20RD1 has a IP68 push-pull connector on one end and an XTL/APX compatible connector with two flying leads on the other end.

### 1. XTL/APX Radio connection – see figures below

Receive audio level is controlled by the radio/control head's volume control. For fixed-level volume, contact the factory for more information.

- a. Transceiver
  - i. Connect the trapezoidal 26-pin connector to the J2 connector on the back of the radio.
  - ii. Cut the flying leads flush and protect with heat shrink tubing.
- b. Control head
  - i. Connect the trapezoidal 26-pin connector to the J100 connector on the back of the control head.
  - ii. Connect the green and black flying leads to J200 pins 1&2, respectively. This connection is in parallel with the external speaker, if equipped.

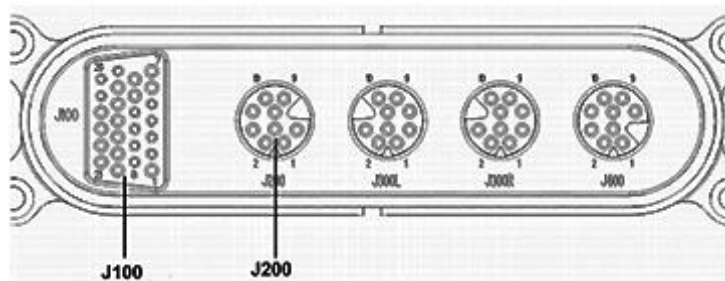
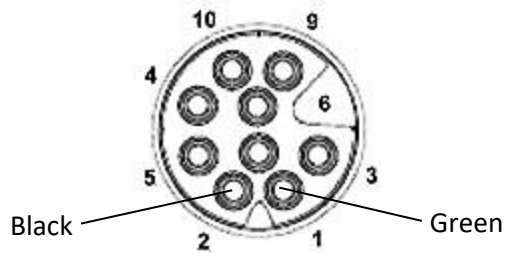


Fig. 1



**J200 Power and Audio Connector**

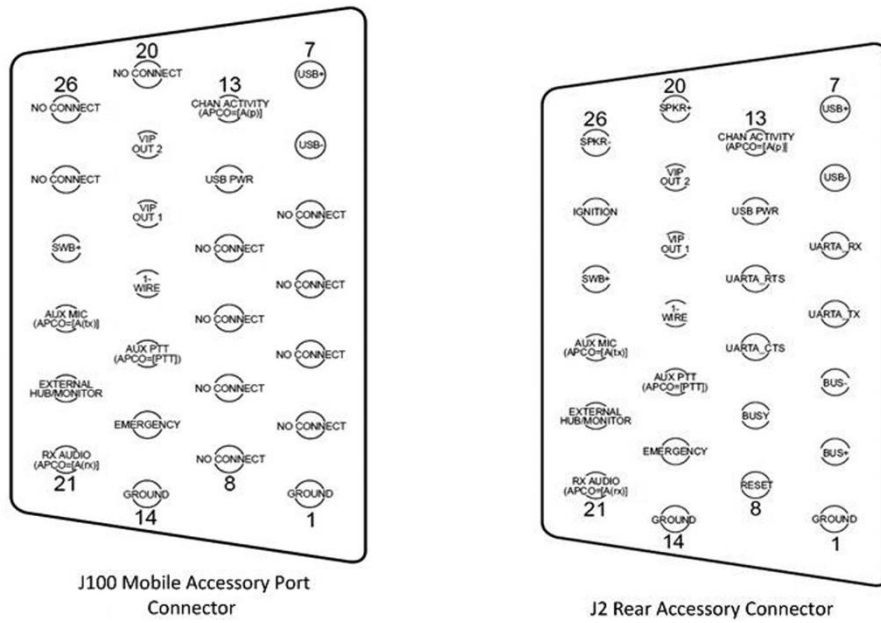


Fig. 2

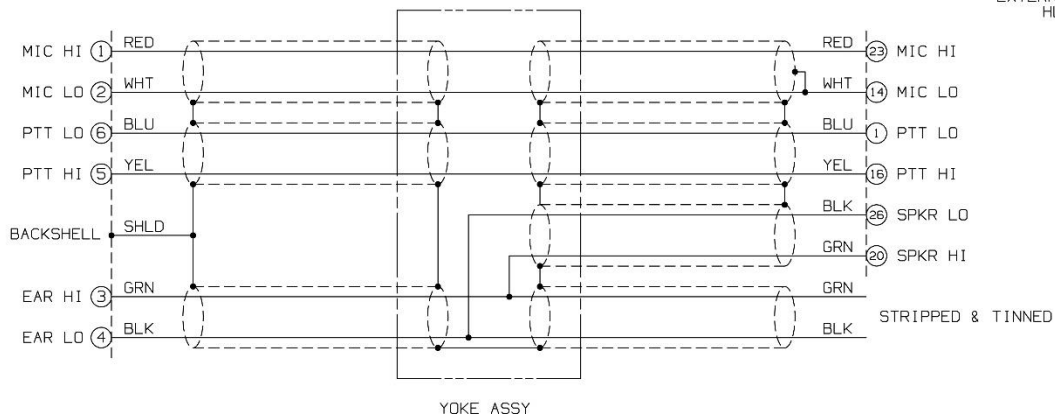
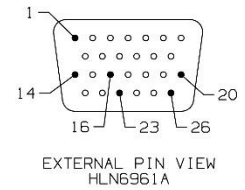
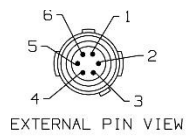


Fig. 3