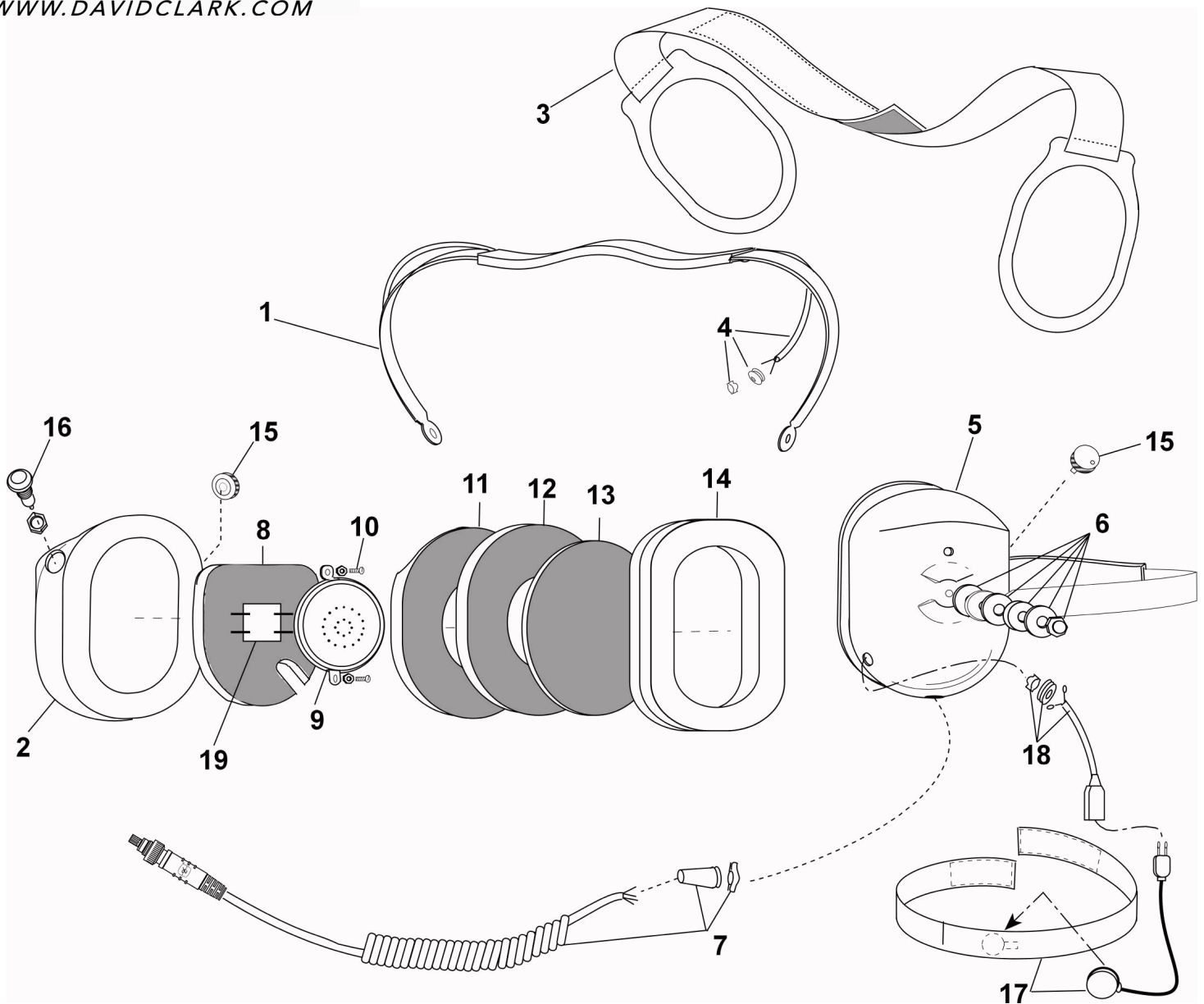


**PARTS LIST
MODEL H9842TM**


No.	Description	Part No.
1	Spring Assembly	40623G-44
2	Dome, Right	15522P-30
3	Support Assembly	10370G-03
4	Overhead Cord Assembly	22607G-13
5	Dome, Left (mic side)	15522P-38
6	Nut and Washer Kit (10 pk)	12052G-04
7	Comm Cord Assy Kit	40599G-72
8	Dome Filter (1 each)	11410P-02
9	Earphone Assembly	10376G-46
10	Screw (10/pk)	00023M-07

No.	Description	Part No.
11	Dome Filter (1 each)	25629P-05
12	Dome Filter (1 each)	14096P-05
13	Filter (1 each)	14096P-09
14	Undercut Gel Earseal (pair)	40863G-02
15	Volume Control	09349P-40
16	Switch Mic ON/OFF	26619P-21
17	Throat Mic w/Neck Band Assy	18882G-06
18	Mic Jack Cord Kit	18825G-12
19	PCB Assy, Mic AMP	40415G-54

ELECTRICAL SCHEMATIC MODEL H9842TM

