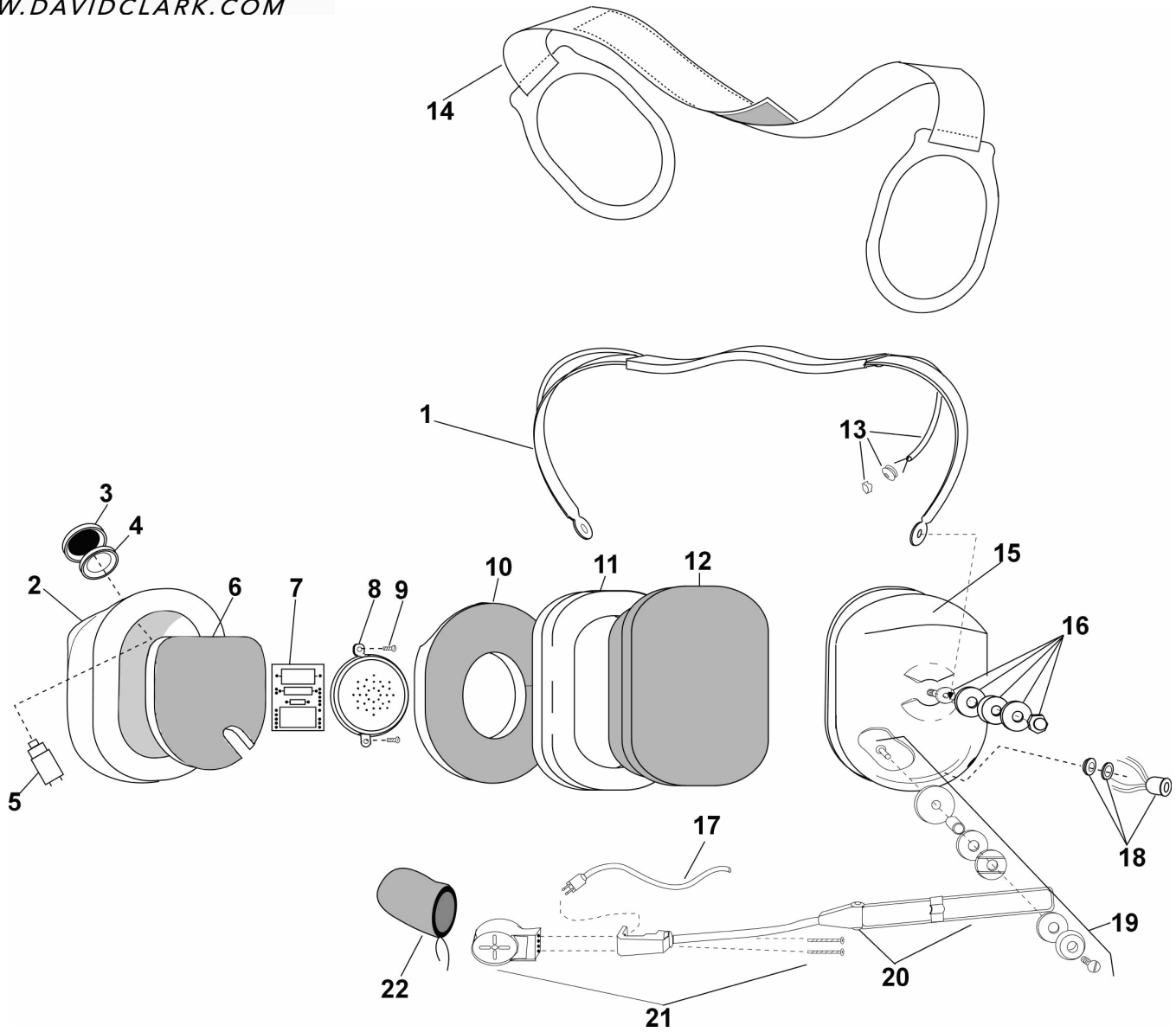


**PARTS LIST
MODEL H8840**



No.	Description	Part No.
1	Spring Assembly	10117G-97
2	Dome, Left	11407P-87
3	Shield, Switch	17976P-01
4	Guard, Switch	26553P-03
5	Push-To-Talk Switch	14033P-01
6	Dome Filter (1 each)	11410P-02
7	Audio Amplifier	18289G-19
8	Earphone Assembly	10376G-37
9	Screw (10/pk)	00023M-07
10	Dome Filter (1 each)	25629P-05
11	Undercut Gel Earseal (pair)	40863G-01

No.	Description	Part No.
12	Earseal Comfort Cover	22658G-01
13	Nape Cord Kit	12662G-09
14	Support Assembly	10370G-03
15	Dome, Right	11407P-88
16	Nut & Washer Kit	12052G-01
17	Mic Cord Kit	18744G-05
18	Connector w/Wires	18818G-03
19	Boom Attachment Kit	12840G-09
20	Boom Assembly	18740G-09
21	Mic M101/A1C 150 ohm	09168P-42
22	Mic Muff	18434G-02

ELECTRICAL SCHEMATIC MODEL H8840

