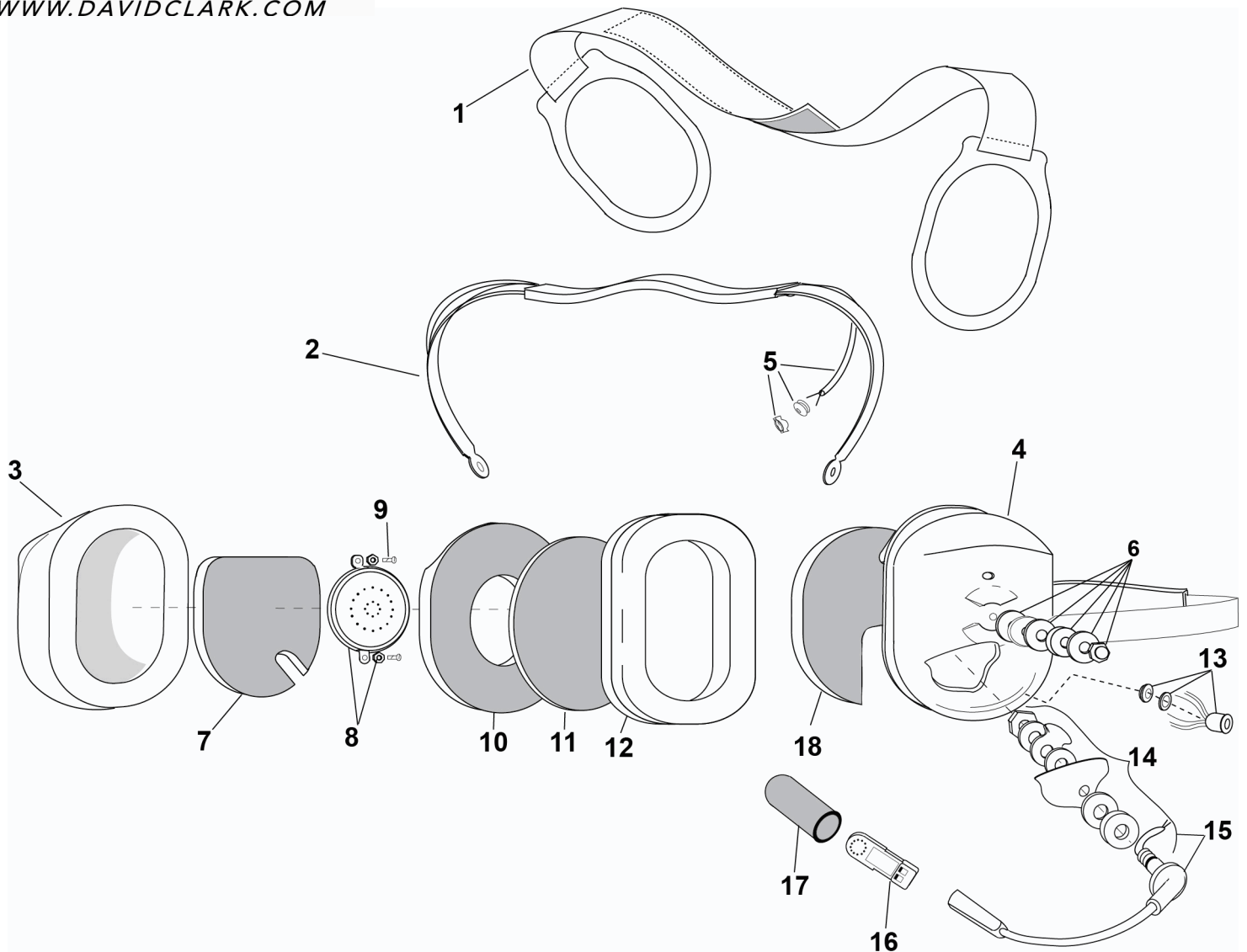


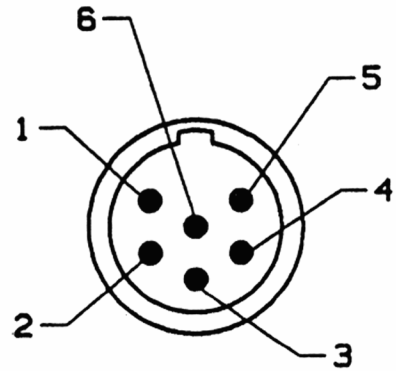
**PARTS LIST
MODEL H6640i**



| No. | Description | Part No. |
|-----|--------------------------|-----------|
| 1 | Support Assembly | 10370G-03 |
| 2 | Spring Assembly | 40623G-25 |
| 3 | Dome, Right | 15522P-24 |
| 4 | Dome, Left (mic. side) | 15522P-26 |
| 5 | Overhead Cord Assembly | 22607G-01 |
| 6 | Nut & Washer Kit (10/pk) | 12052G-03 |
| 7 | Dome Filter (1 each) | 11410P-02 |
| 8 | Earphone Assembly | 10376G-43 |
| 9 | Screw (10/pk) | 00023M-08 |

| No. | Description | Part No. |
|-----|---------------------------|-----------|
| 10 | Dome Filter (1 each) | 25629P-05 |
| 11 | Filter (1 each) | 14096P-09 |
| 12 | Earseal (pair) | 18316G-02 |
| 13 | Connector w/Wires | 18818G-19 |
| 14 | Boom Attachment Kit | 12840G-19 |
| 15 | Kit, Boom Assembly w/Att. | 41090G-12 |
| 16 | M-77 Electret Mic | 09168P-35 |
| 17 | Mic Protector Pkg | 40062G-02 |
| 18 | Dome Filter (1 each) | 15545P-01 |

ELECTRICAL SCHEMATIC
MODEL H6640i



TB6M
SWITCHCRAFT
PIN VIEW

