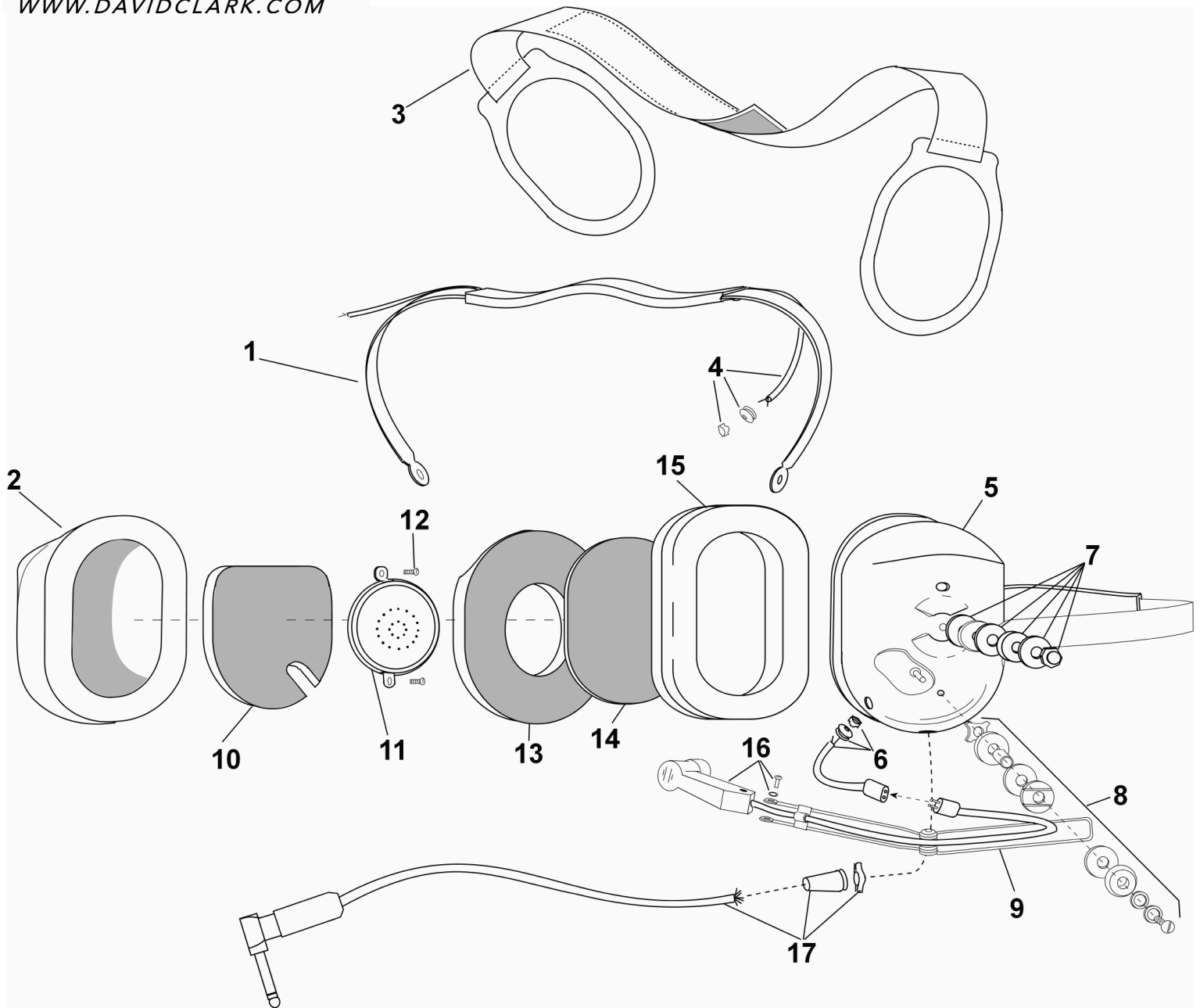


PARTS LIST
P/N 40859G-01



No.	Description	Part No.
1	Spring Assembly	40623G-19
2	Dome, Right	15522P-03
3	Support Assembly	10370G-03
4	Overhead Cord Assembly	22607G-01
5	Left Dome	15522P-07
6	Microphone Jack Cord Assy	18825G-10
7	Nut and Washer Kit (10 pk)	12052G-02
8	Boom Guide Kit	12840G-01
9	Microphone Boom Assy	12765G-04

No.	Description	Part No.
10	Dome Filter (1 each)	11410P-02
11	Earphone Assembly	10376G-37
12	Screw (10/pk)	00023M-07
13	Dome Filter (1 each)	25629P-05
14	Filter (1 each)	14096P-09
15	Flo-Fit Gel Earsel (pair)	40243G-02
16	Microphone	12948G-07
17	Communication Cord Kit	40599G-49

ELECTRICAL SCHEMATIC
P/N 40859G-01

