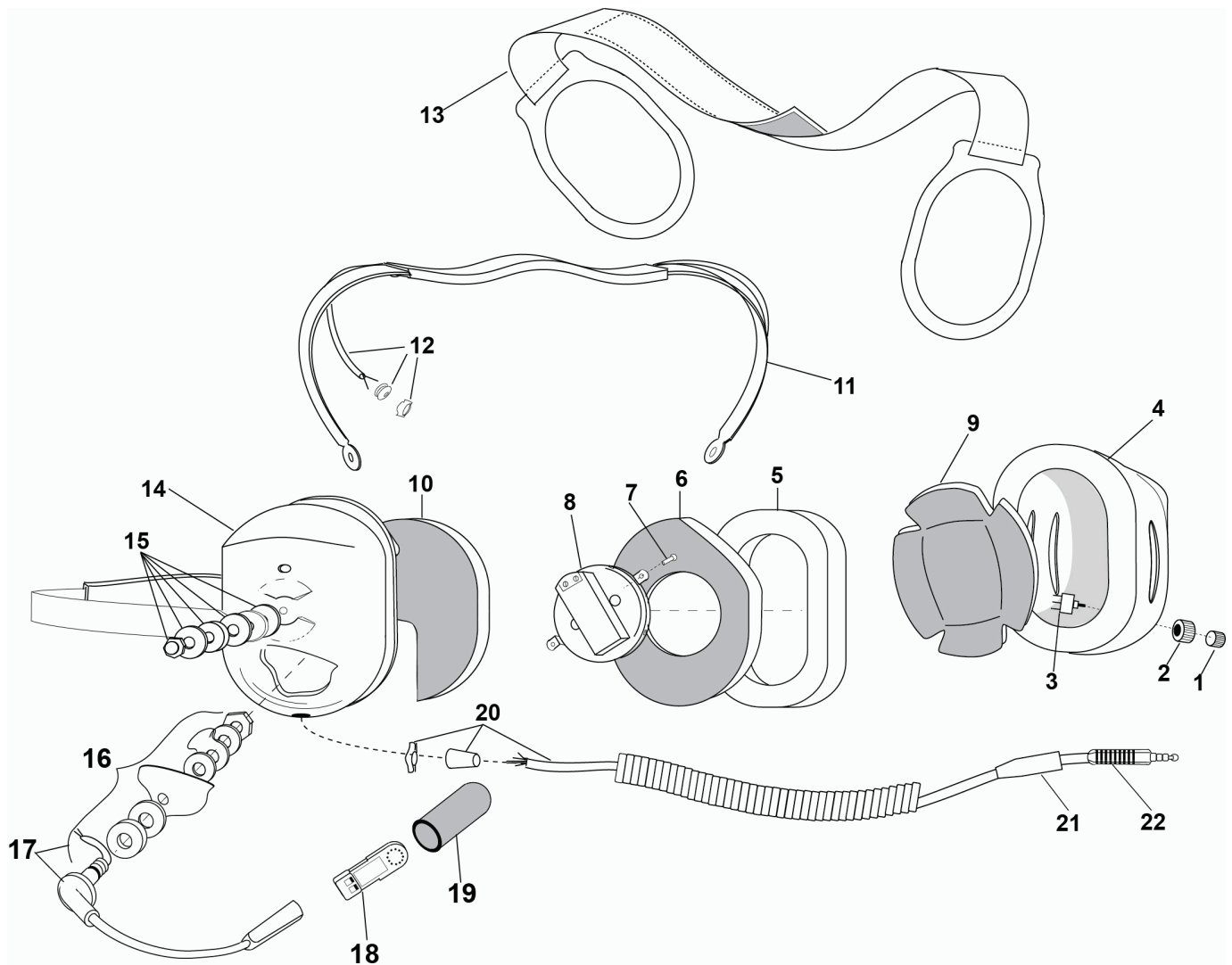


David Clark COMPANY INCORPORATED

360 Franklin Street, Box 15054, Worcester, MA 01615-0054
TEL.: (508) 751-5800 E-Mail: sales@DavidClark.com FAX: (508) 753-5827

PARTS LIST MODEL H4241



No.	Description	Part No.
1	Switch Cap Kit	41090G-13
2	Switch Guard	13148P-01
3	Push Button Switch	09851P-17
4	Left Dome	15522P-09
5	Earseal (pair)	18316G-02
6	Dome Filter (1 each)	25629P-05
7	Screw (10/pk)	00023M-07
8	Earphone Assembly	10376G-29
9	Dome Filter (1 each)	24636P-03
10	Dome Filter (1 each)	15545P-01
11	Spring Assembly	10117G-97

No.	Description	Part No.
12	Overhead Cord Kit	22607G-11
13	Support Assembly	10370G-03
14	Dome, Left (mic. side)	15522P-02
15	Nut and Washer Kit (10 pk)	12052G-02
16	Boom Attachment Kit	12840G-19
17	Kit, Boom Assembly w/Att.	41090G-12
18	M-77 Electret Mic	09168P-35
19	Mic Protector	40062G-02
20	Comm Cord Kit	18028G-75
21	Sleeve, Bend Relief	15333P-01
22	Connector, Electrical	09226P-02

ELECTRICAL SCHEMATIC
MODEL H4241

