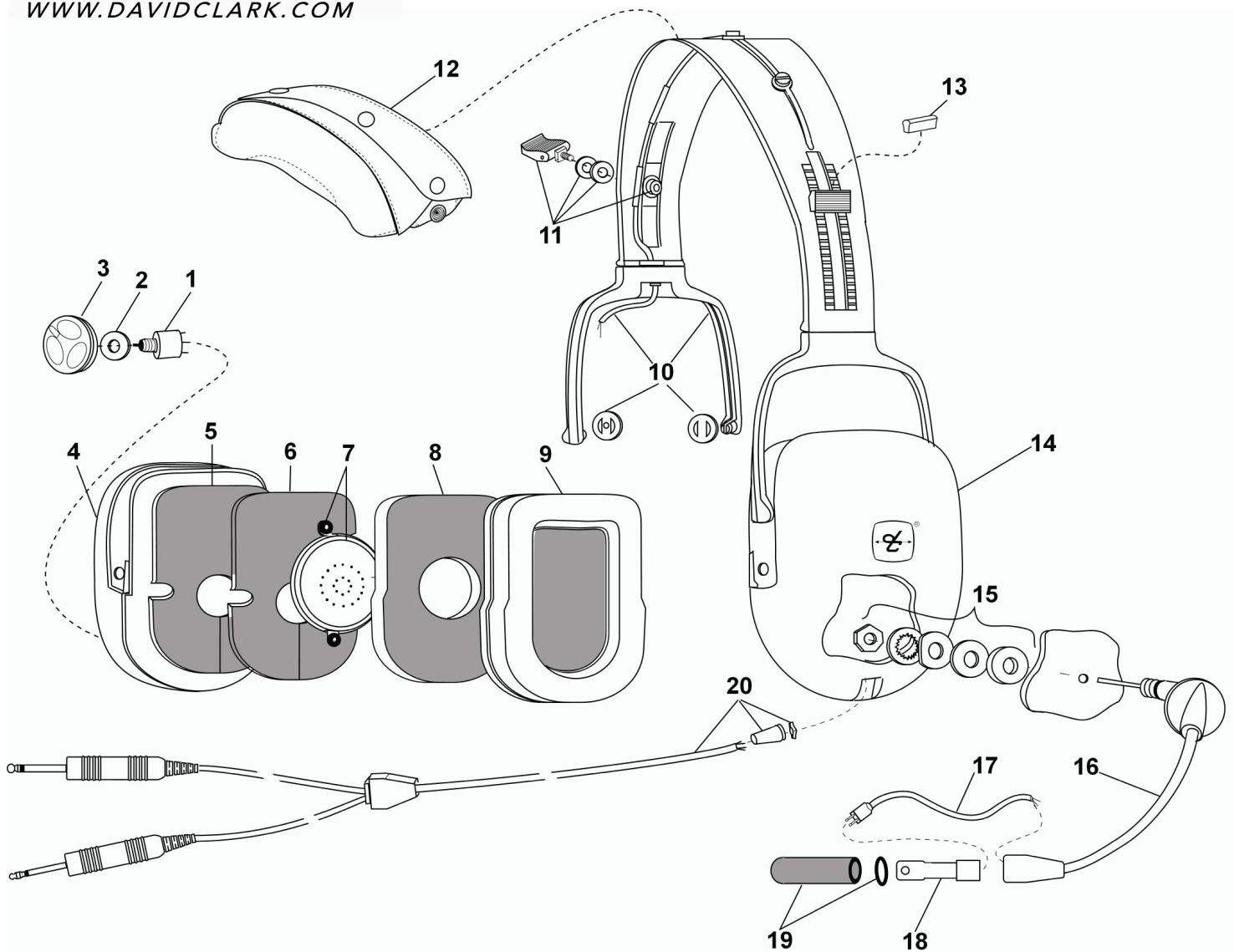


**PARTS LIST  
MODEL H20-10**



No.	Description	Part No.
1	Volume Control	09349P-58
2	Washer, Neoprene (10/pk)	40688G-21
3	Knob, Volume Control	15423P-01
4	Dome, Stamped RH	40500G-01
5	Filter, Dome, Yellow (1 each)	14096P-13
6	Filter, Dome, Charcoal (1 each)	14096P-12
7	Earphone Assembly	10376G-20
8	Filter, Dome (1 each)	25629P-08
9	Flo-Fit Gel Earseals (pr)	40243G-05
10	Headband Assy Kit	18900G-73

No.	Description	Part No.
11	Headpad Latch Kit	18900G-72
12	Headpad, Stretching	40501G-01
13	Latch Stop Kit	18900G-66
14	Dome, Stamped LH	40499G-01
15	Boom Attachment Kit	12840G-12
16	Mic Boom Assembly	18688G-08
17	Microphone Plug Cord	18744G-01
18	M-7A Electret Mic	09168P-33
19	Mic Protector w/ O-Ring	40062G-02
20	Comm Cord Kit	18028G-01

ELECTRICAL SCHEMATIC  
MODEL H20-10

